

## ANALYSIS OF REWETTING TIME AND TEMPERATURE DISTRIBUTIONS DURING COOLING PROCESS IN VERTICAL RECTANGULAR NARROW CHANNEL

IGN. Bagus Catrawedarma<sup>1</sup>, Indarto<sup>2</sup>, Mulya Juarsa<sup>3</sup>, Anhar Riza Antariksawan<sup>3</sup>

<sup>1</sup>Faculty of Engineering, Indonesia Hindu University, Bali, Indonesia

<sup>2</sup>Mechanical and Industrial Engineering Department, Gadjah Mada University

<sup>3</sup>Indonesia Nuclear Energy Agency, Tangerang, Indonesia

Masuk: 5 Mei 2013, revisi masuk: 9 Juni 2013, diterima: 3 Juli 2013

### ABSTRACT

Cooling process to analyze effect of gap size to rewetting time and temperature distributions were studied from transient temperature of surface plate. It as result of experiment using two vertical plate with the initial temperature about 600°C. Debit and temperature of cooling water are 0,09 L/s and saturated temperature. The gap sizes were changed from 1 mm, 2 mm, and 3 mm. As the results showed that the smaller the gap size, the longer the rewetting time. Pattern of temperature distribution is similar at initial condition for all of gap sizes and the smaller the gap sizes, the longer the time of decreasing temperature.

**Keywords:** cooling process, rewetting time, temperature distribution.

### INTISARI

Proses pendinginan untuk menganalisis pengaruh ukuran celah terhadap waktu rewetting dan distribusi temperatur telah dipelajari berdasarkan transien temperur dari permukaan plat. Pada analisis tersebut berdasarkan hasil ekperimen yang menggunakan 2 plat vertikal dengan temperatur awalnya sekitar 600C. Debit dan temperatur air pendingin adalah 0,09l/s dan temperatur saturasi. ukuran celahnya divariasikan dari 1, 2, 3 mm. Hasil penelitian menunjukkan bahwa semakin kecil ukuran celah, semakin lama waktu rewetting. Pola distribusi temperatur saat kondisi awal adalah sama unuk semua ukuran celah dan semakin kecil ukuran celah, semakin lama waktu untuk menurunkan temperatur plat.

**Kata kunci:** proses pendinginan, waktu rewetting, distribusi temperatur

### INTRODUCTION

Cooling process is one of the important processes for system sustainability. It is a process of decreasing temperature, and it is occurred heat transfer from medium with higher to lower temperature. In cooling process, transient and distribution temperature need to be known to determine the rewetting point. Cooling process phenomena can be known in severe accident reactor nuclear Three Miles Island 2 (TMI-2). TMI-2 nuclear accident is one of the cases about cooling process in narrow channel. It is formed between debris and wall reactor

pressure vessel (RPV). Based on Juarsa<sup>[2]</sup> opinion that the debris has been cooled by water in the bottom reactor and it can't exit from RPV wall, so reactor condition can be controlled. When the debris move to bottom (see Figure 1), then a part of cooling water volume is moving to upper part and evaporation process is occurred. The vapor is moving to upper part but the cooling water is continually flowing to the bottom, then it is occurred counter current flow (CCF) between vapor and cooling water (see Figure 1).

The first contact of cooling fluid to wall surface is known as rewetting

point. It is indicated by drastically drop temperature of wall surface.

It is one of the important roles to maintain the condition of wall surface, and then melting point can be controlled. In other parts, temperature distribution of wall surface need also to be considered, so the temperature of each point in the wall surface can be known to maintain

the temperature in order to unclose to the melting point.

So, the severe accident of reactor nuclear can be avoided. Some experiments about cooling process in narrow channel have been conducted by researcher.

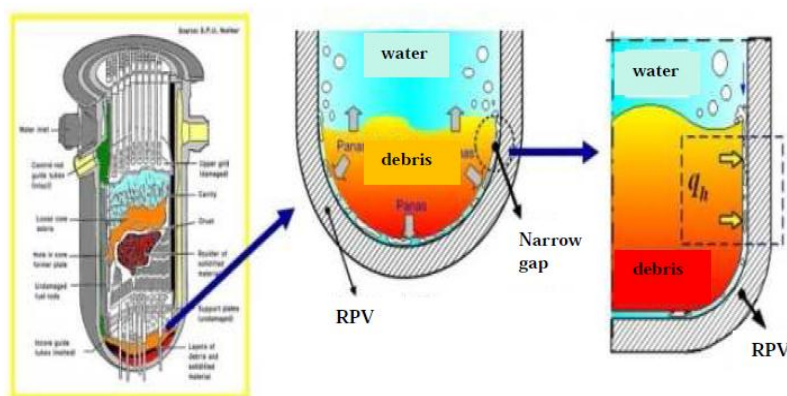


Figure 1. Narrow gap in the nuclear reactor (Riyono, B, 2010)

Zhang et al , 2003 was conducted the experiment in vertical annulus narrow channel with the water as cooling fluid based on single heated case. It is using the 300 mm length, the gap sizes were changed from 0.5 mm, 1.0 mm, 2.0 mm, 4.0 mm, and 7.0 mm. The initial temperature of plate surface was varied from 500 °C, 650 °C, and 800°C. The results are the smaller the gap size, the longer the rewetting time and rewetting time of 4.0 mm is very closing to 7.0 mm gap size. It is caused by effect of Counter Current Flow Limitation (CCFL).

Juarsa and Antariksawan <sup>[1]</sup> were conducted the experiment with some of the variable is similar to Zhang et al <sup>[3]</sup> experiment. Juarsa and Antariksawan <sup>[1]</sup> were proposing the rewetting pattern of cooling process in annulus vertical narrow channel with the 1.0 and 4.0 mm gap sizes, 300 mm heated length, and saturated water as cooling fluid. The initial temperature of heated surface is 800°C. For 1.0 mm gap size, the rewetting is started from upper, then lower, and finish at middle part of the heated surface. In other parts, for 4.0 mm gap size, rewetting process is started

from lower, then middle, and finish at upper part of the channel.

Next, experiment Riyono et. al <sup>[2]</sup> is similar to Zhang et.al , 2003 and Juarsa and Antariksawan, 2010. Riyono et. al , 2007 was using annulus as geometry channel, with the 800 mm heated length, 1.0 mm gap size, and 650°C initial temperature of surface. Water as cooling fluid with the temperatures were varied from 75°C, 85°C, and 95°C. As the results that rewetting time at 75°C is longer than 85°C dan 95°C temperature of water. This experiment show that change phase at 85°C and 95°C are easier than 75°C temperature of water. So, it is causing film boiling existence is shorter than 75°C temperature of water.

The previous experiments are indicating that the experiments about cooling process in the narrow gap are one of the complex analyzes because it is influenced by some variables. Therefore, in this study is to know effect of gap size to rewetting time and temperature distributions in vertical rectangular narrow channel. Rewetting time is analyzed from transient

temperature of heated plate and then temperature distributions as the contour of the temperature of plate at certain time.

**METHOD**

Experimental Apparatus, this experiment is a joint two facilities. They are Untai Uji Beta (UUB) and HeaTiNG-02 (see Figure 2). UUB is used to set-up flow rate and temperature of cooling water before it is flowed to the channel. UUB has a centrifugal pump for setting-up flow rate of the cooling water and circulating it, flow meter is used to know mass flow rate of the cooling water, pre heater is used to increase the cooling water temperature, thermocouple is used to measure the temperature, and some of valves are used to open or close the cooling water flow. HeaTiNG-02 is the main test section. It has main and cover plates stainless steel with 8 mm and 3 mm thickness, 1100 mm length, 50 mm width. Narrow gaps of the main and cover plates are changed from 1.0 mm, 2.0 mm and 3.0 mm. The main and cover plates have six chromel-allumel thermocouples (see Figure 3). It is used to measure of temperature during heating and cooling process. Figure 2 show the schematic apparatus.

WinDAQ T1000 data acquisition system (DAS) is used to measure plate temperature during process with 1 data per second. Slide regulator with the 25 kW maximum power is used to change power input during heating process until the plate temperature is about 600°C. The power input was gradually increased for uniform plate temperature.

Experimental Procedure, the experiment is started by setting up the gap size. The range is shown in **Table 1**.

Bottom part is opened, so the pressure system is about atmospheric pressure, and then the plates are heated by ceramic heater until the initial temperature is about 600°C. If it has been reached, the ceramic heater is switched off, then 0.09 L/s and about 90°C of cooling water that controlled at UUB is flowed to the channel. If all of the temperatures are closing to 90°C, the experiment is stopped.

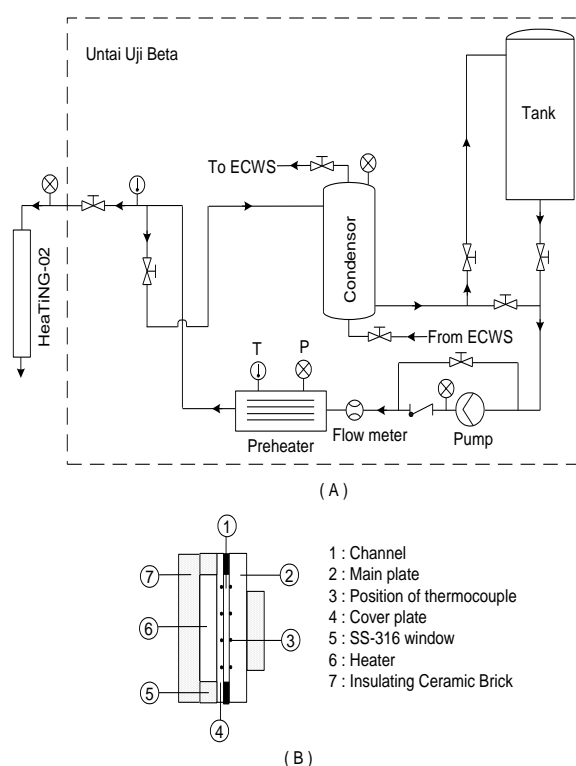


Figure 2. (A) Schematic apparatus, (B) Detail HeaTiNG-02

**Table 1.** Experimental variable

Variable	Value		
	I	II	III
Gap Size (mm)	01.00	02.00	03.00
Initial temperature (°C)	600.0	600.0	600.0
Cooling water mas flow rate (L/s)	00.09	00.09	00.09
Cooling water temperature (°C)	90.00	90.00	90.00

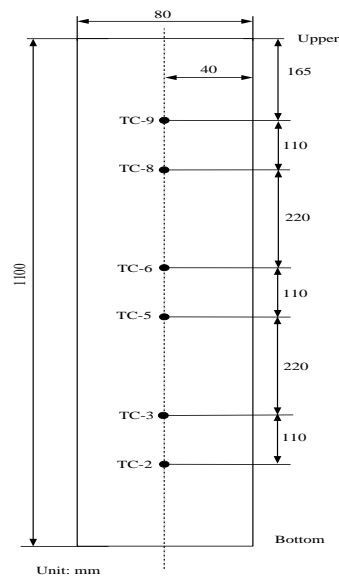


Figure 3. Thermocouple position on main and cover plate

Plate temperature is slightly decreasing before and after rewetting point. Rewetting point can be known from transient temperature. It is a condition when the cooling water contact to the surface plate and indicated by drastically drop temperature. Figure 4 also shown that the smaller the gap size, the longer the rewetting time. It is caused by the smaller the gap size, the higher the vapor pressure in the channel. Hence, the smaller mass flow rate of water cooling, the longer the time of vapor contraction in the channel. In the condition, penetration of water in the channel is resisted by vapor that existed on the surface of plate, so the longer the contact time of cooling water to plate surface. Next condition, temperature is not significantly decreasing, because deference temperature between plat surface and cooling water is not so high.

**DISCUSSIONS**

Figure 4 show that decreasing temperature is occurred in the plate.

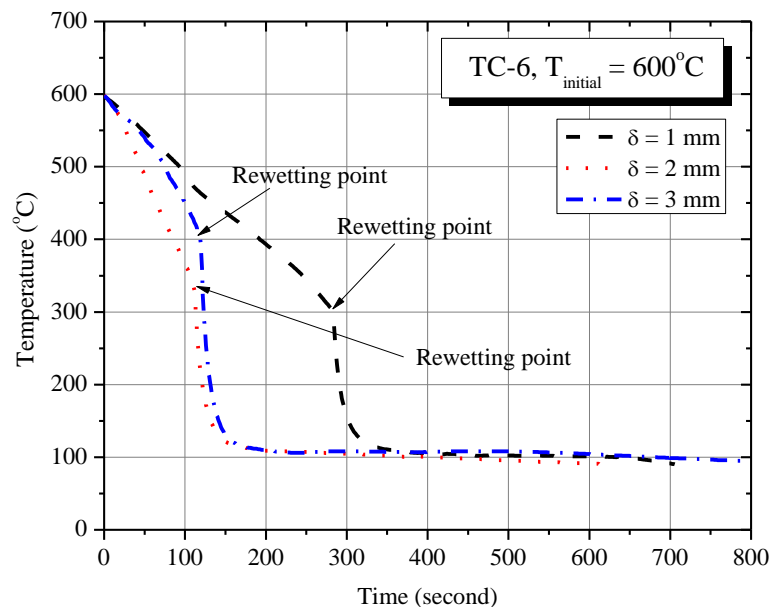


Figure 4. Transient Temperature TC-6

Temperature distribution was made from data of plate temperature. It was recorded by DAS and then plotted by Origin computer program with the contour type. So, as the results are

showed in Figure 5 up to Figure 7. In the initial condition, the pattern of temperature distribution is similar for all of the gap size and show that the air was flowing to the channel. It is indicated by

plate temperature in the bottom part is smaller than other. The phenomena is

similar therefore the gap sizes was changed.

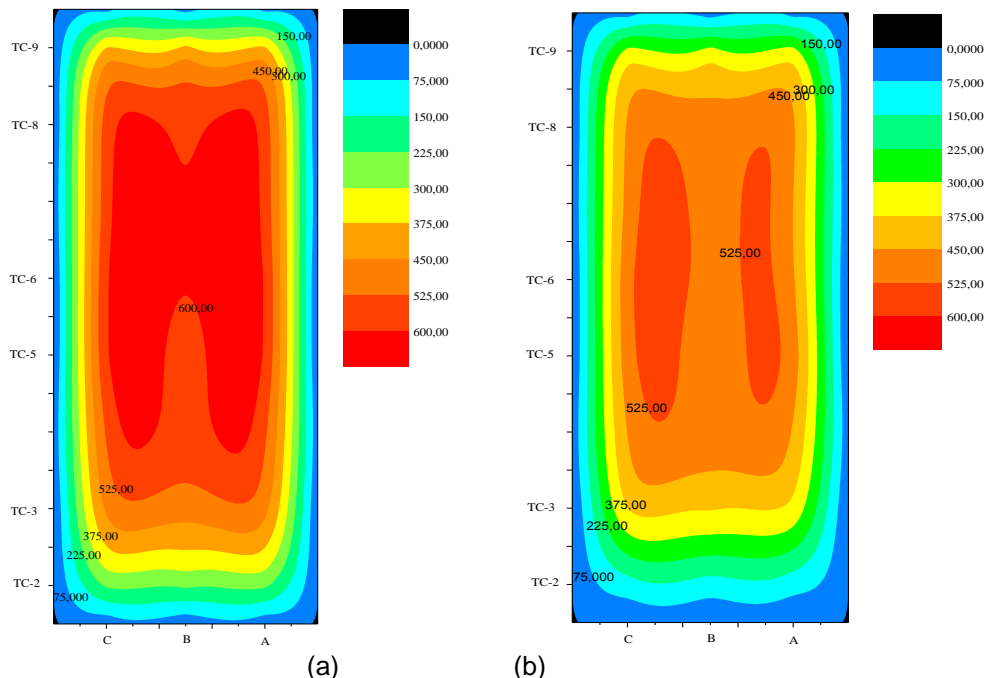


Figure 5. Temperature Distributions at  $T_{\text{initial}} = 600^{\circ}\text{C}$  for  $\delta = 1 \text{ mm}$ ,  
 (a) The 1<sup>st</sup> seconds, (b) The 100<sup>th</sup> seconds

**For  $\delta = 1 \text{ mm}$ :**

At the 100<sup>th</sup> seconds was occurring the decreasing of temperature for all of the thermocouple. The cooling water was flowing in the center of the plate, so the temperature is smaller than side part. The temperature in bottom part is smallest because it is caused by flowing air to the channel from the bottom part.

**For  $\delta = 2 \text{ mm}$ :**

Different condition is occurred at the 100<sup>th</sup> seconds. From Figure 6 is shown that the bottom temperature is smaller than the middle part of plate. It is indicating that the cooling water is flowing through side part to contact to the bottom part. In other hand, the temperature

middle part is still highest than other parts.

**For  $\delta = 3 \text{ mm}$ :**

Pattern of temperature distribution at  $\delta = 3 \text{ mm}$  is similar with  $\delta = 2 \text{ mm}$ . It is a indication that decreasing temperature at  $\delta = 3 \text{ mm}$  is closed to  $\delta = 2 \text{ mm}$ . At  $\delta = 3 \text{ mm}$ , quantity of air is so high to flow in the channel because the gap is longest than other. So, from all of the temperature distributions are known that the higher the gap size, the faster the decreasing temperature. It is caused by the smaller the gap size, the higher the effect of CCFL, then the longer the time contact to surface plate. So, decreasing plate temperature need a long time.

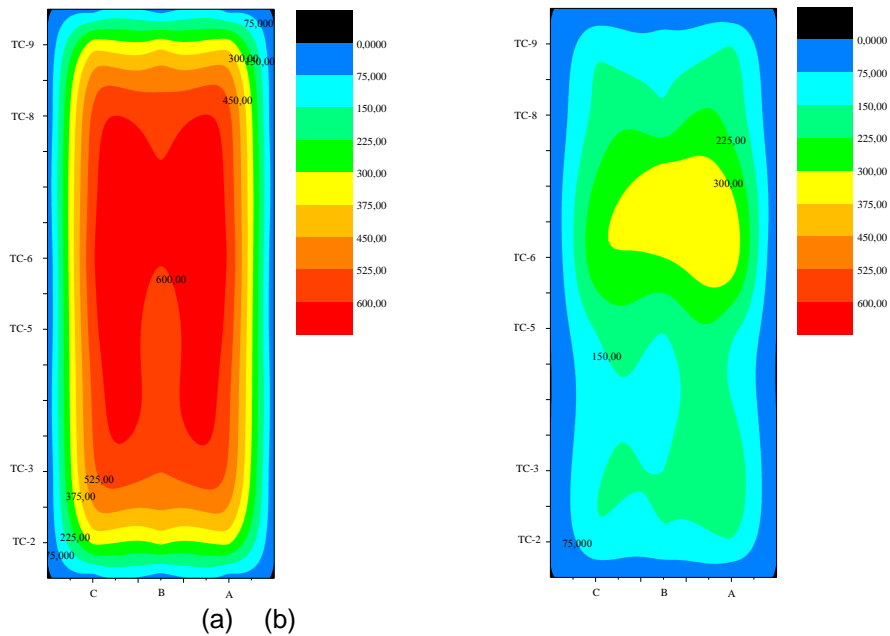


Figure 6. Temperature Distributions at  $T_{\text{initial}} = 600^{\circ}\text{C}$  and  $\delta = 2 \text{ mm}$ ,  
 (a) The 1<sup>st</sup> seconds, (b) The 100<sup>th</sup> seconds

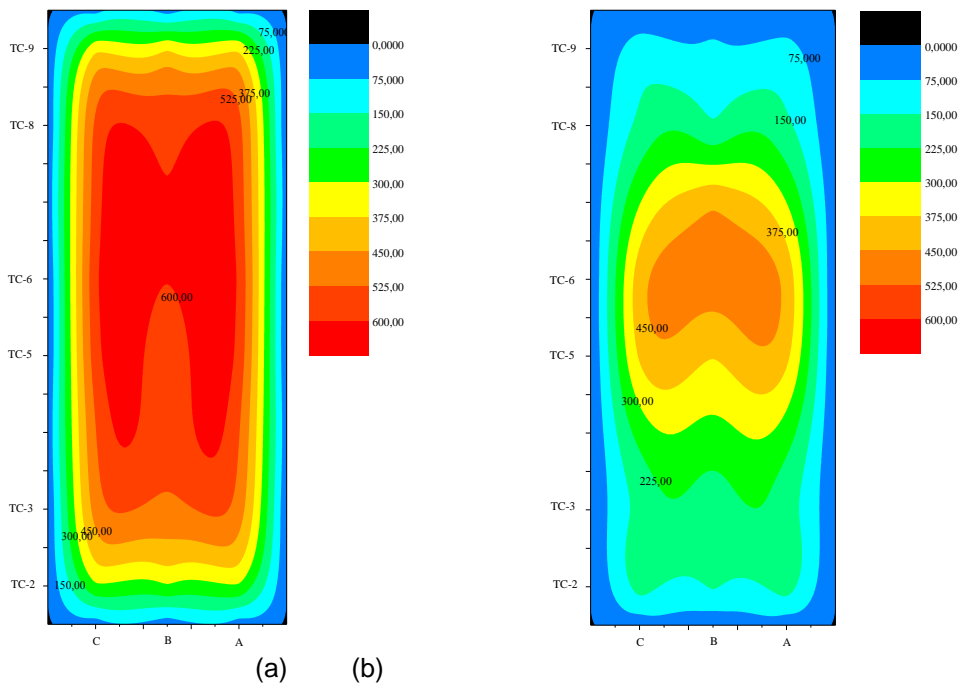


Figure 7. Temperature Distributions at  $T_{\text{initial}} = 600^{\circ}\text{C}$  and  $\delta = 3 \text{ mm}$ ,  
 (a) The 1<sup>st</sup> seconds, (b) The 100<sup>th</sup> seconds

### CONCLUSIONS

From the discussion above can be concluded that The smaller the gap size, the longer the rewetting time.

Pattern of temperature distribution is similar at initial condition for all of gap sizes. The smaller the gap sizes, the longer the time of decreasing temperature.

#### ACKNOWLEDGEMENT

Thank you very much to Mr. Ismu Handoyo, Mr. Kiswanta, Mr. Joko P, and Mr. Ainur R for their help and caring attitude. Thanks to Ministry of Research and Technology, Indonesia Government for Insentif Research Grant 2009. Thanks to Thermo Hydraulic research group, Center of Reactor Technology and Safety Nuclear, Indonesia National Nuclear Energy Agency, Tangerang, Indonesia for their support activity.

#### REFERENCES

Juarsa, M., dan Antariksawan, A.R., 2007, *Effect of Counter Current Flow Limitation on Boiling Heat Transfer in A Narrow Gap*, Tri Dasa Mega

Journal of Nuclear Reactor Technology, Vol. 10 No. 1.  
Riyono, B., Indarto, Juarsa, M., Sinta, T.H., Kiswanta., Ainur., Edy., Joko., Ismu H., 2010, *Experimental Analisis of Heat Flux in Annulus Narrow Channel Based on Variations of Cooling Water Temperature Using Uji HeaTING-01*, Gadjah Mada University.  
Zhang, J., Tanaka, F., Juarsa, M., Mishima, K., 2003, *Calculation of Boiling Cuves during Rewetting of a Hot Vertical Narrow Channel*, The 10<sup>th</sup> International Topical Meeting on Nuclear Reactor Thermal Hydraulics.